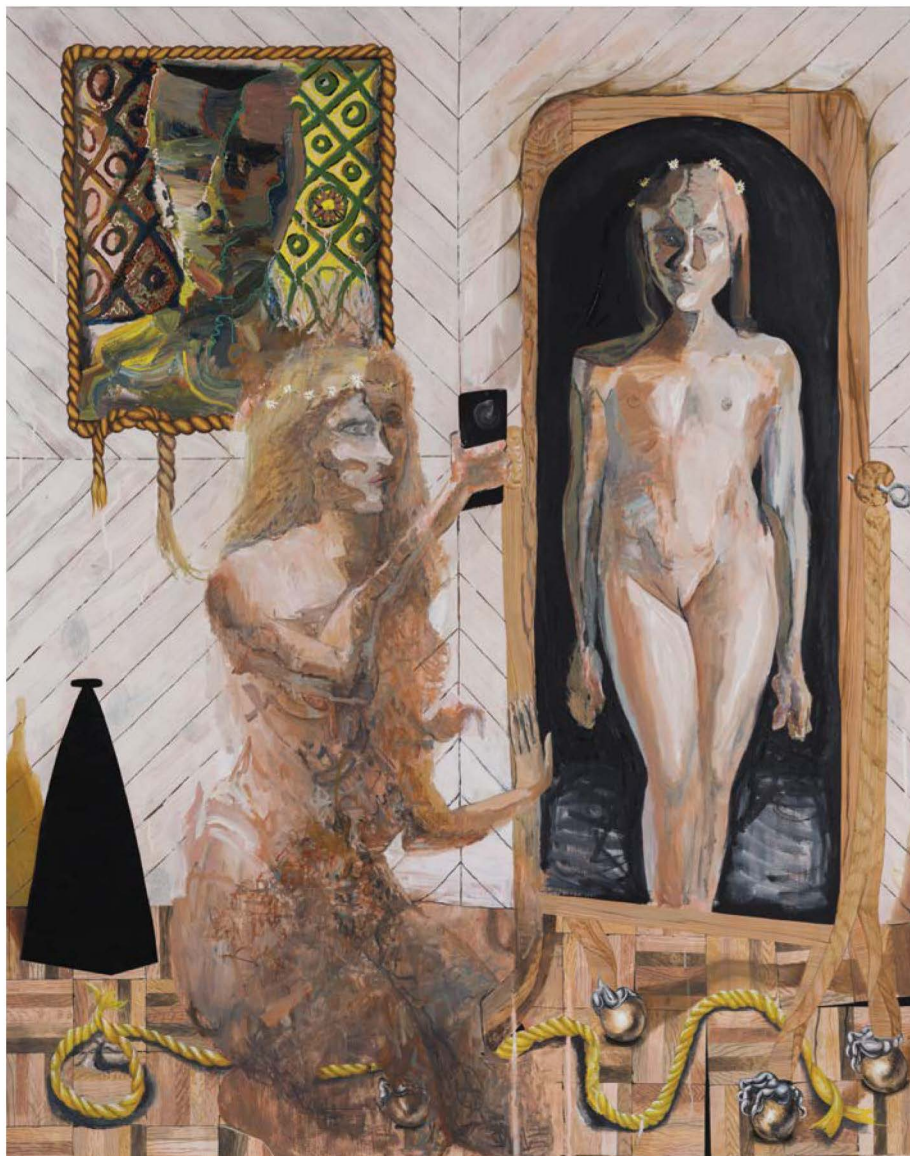


**ART
MAZE
Mag**

Winter Edition, Issue 11, 2019





E l i z a b e t h M a l a s k a

www.elizabethmalaska.com

Image:

Form and Void
oil, flashe, charcoal on canvas
60 x 40 inches



Elizabeth Malaska was born and raised in Portland, OR. She earned her BFA in Painting from CCA and her MFA in Visual Studies from PNCA. Her work has been exhibited at Portland Community College, Froelick Gallery, California College of the Arts, and College of the Atlantic, and has been reviewed in ArtForum and Art in America. She is the recipient of numerous awards including: a Joan Mitchell Foundation Grant, a Hallie Ford Fellowship, and a grant from the Elizabeth Greenshield's Foundation, and her work is part of the permanent collection at The Portland Art Museum. Elizabeth lives with her husband and daughter in Portland, and is represented by Portland's Russo Lee Gallery.

I make paintings about the struggles of living under patriarchy. Through depicting women's bodies, I confront gendered prejudices about how women should look and act, posing questions such as: how do we look at women, and what exactly constitutes womanhood.

The history of painting is littered with submissive bodies of women. Using signifying images and techniques, I activate these histories, questioning their validity and proposing more complex and potent feminine subjects.

The women I depict do not possess perfect bodies. Theirs are lumpy, disproportionate, with generous rolls of fat and flesh. Often unhappy, they look, at times, grief-stricken. Emotionality—especially suffering—is feminized and deemed inappropriate. My women take up a lot of space on the canvas, often occupying the extreme foreground and dominating the picture plane. This is a very deliberate strategy to disallow the viewer avoidance of these unruly women—their physiques or psyches.

Image (right):

Lament
oil, flashe, charcoal on canvas
47 x 38 inches